

# **GWYNNEVILLE PS**

# NEWSLETTER



Gwynneville Public School ■ 10A Acacia Ave Gwynneville NSW 2500 ■ Phone: (02) 4229 5728 ■  
Fax: (02) 4226 5058

**Term 2: Week 7 Issued: Wednesday, 12 June 2013**

## **SCHOOL CALENDAR 2013**

### **TERM 2— JUNE**

#### **WEDNESDAY 12/6**

ACTIVE AFTERSCHOOLS  
PROGRAM—YEARS K TO 2 -  
3.15-4.15 PM

#### **FRIDAY 14/6**

P & C Pizza Day  
Assembly—2A

#### **MONDAY 17/6**

Choir Rehearsal-Pleasant  
Heights Public School

#### **THURSDAY 20/6**

P & C Meeting—9:30 Library

#### **FRIDAY 21/6**

Canteen Snack Day

#### **MONDAY 25/6**

Naidoc Activities Day

#### **THURSDAY 27/6**

P & C Hot Dog Day

#### **FRIDAY 28/6**

Symbio Wildlife Park Excursion  
Stage 1  
Last Day of School –Term 2

#### **MONDAY 15/7**

Staff Development Day –NO  
STUDENTS

#### **TUESDAY 16/7**

Students Return to school



## **The Principal**

### **SEMESTER 1 REPORTS**

Teachers are currently preparing the students' Semester 1 Reports. The reports will be sent home on Thursday, 27 June 2013 (last week of Term). If you require your child's report earlier, please let the teacher know. *Parent/Carer Meetings* will take place in the first three weeks of next Term with the exception of Miss Kelly who will conduct hers the last two weeks of this term.

### **MRS MCGEE RETURNING**

Next Term we will welcome back Mrs McGee from Maternity Leave. She will share the class on a part time basis with Miss Kelly.

### **THANK YOU TO MRS DEVLIN**

Thank you to Mrs Devlin for her organisation of our Winter Woolies Day. Congratulations to the students for their behaviour and participation on the day. The children will be involved in activities ongoing throughout next term learning about aspects of the farming industry with a focus on wool (from the sheep to the shelf).

### **CHORAL FESTIVAL**

Senior students are busy rehearsing for the Choral Festival next Term. The first rehearsal will be next Monday, 17 June 2013 at Pleasant Heights Public School. Choir members must be at school by 8:45am

Our performance is on Thursday evening, 25 July at the Wollongong Town Hall. There will be a rehearsal at the Town Hall during the day



## **IMPORTANT**

GWYNNEVILLE PUBLIC SCHOOL  
IS A NUT FREE ZONE



**NO NUTS OR NUT BASED PRODUCTS CAN BE  
BROUGHT TO THE SCHOOL**

## **P & C Meeting**

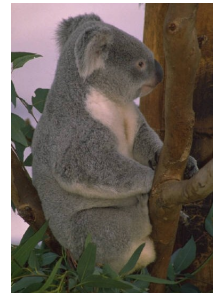
GWYNNEVILLE PUBLIC SCHOOL - LIBRARY  
9.30 AM

**THURSDAY, 20 JUNE 2013**



## SYMBIO WILDLIFE PARK EXCURSION REMINDER

Parents please return the permission note and money for the Symbio Excursion which is on the last day of Term, 28 June 2013. This excursion is in relation to the Australian Animals Roles and Responsibilities that Stage 1 are learning at this time. The Excursion will be cancelled if there is not enough students attending. Please return the above as soon as possible. Thank you for your co-operation in this matter.



### AWARDS

#### Congratulations to the following students

##### BRONZE

<b>KDL</b>	Xander Anastas	Quaylah Davey			
<b>6E</b>	Sam Anderson	Aisyah Azman	Ekoue D'Almeida	Jack Galevski	Ethan Georgeou
	Michael Hililan	Teodora Jovanovic	Tiana Poposki	Rubab Rahman	Paris Raphael
	Ali Sangi				

**A REMINDER ABOUT ABSENCES— IT IS  
IMPORTANT TO RING, SEND IN NOTE OR FILL  
OUT ABSENTEE SLIP AT SCHOOL OFFICE.**

## SCHOOL NEWS

### COLES SPORT FOR SCHOOLS UPDATE

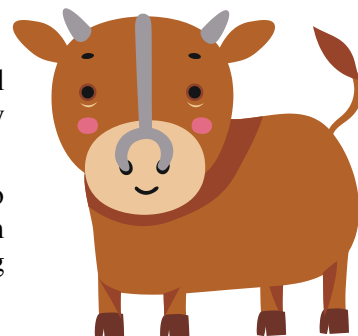
We recently received some new sporting equipment, softball kits, netballs, soccer balls and bocce sets that the children will be able to use.

### ARCHIBULL PRIZE

Gwynneville Public School has been entered this year in Art 4 agriculture's "Archibull Prize" which is a nation wide competition that looks at how farmers and the community work together for a sustainable future.

Our topic for study is "wool" and as a whole school we will be involved in activities to support this over the next two terms. Year 6 will be designing / presenting information to support this topic on our life size calf Archie, that you may have seen wandering around the school lately.

On Tuesday, 11 June 2013 Mrs Payne, Mrs Devlin and our School Captains attended an official launch in Kiama.



### WINTER WOOLIES DAY

Monday, 3 June 2013 was our Winter Woolies Day. The children enjoyed activities about wool and sheep. The lambs from "Animals on the Move" were a hit with the whole school.

Thank you to all those mums and dads who helped with the meal deals, fairy floss and popcorn. Your help was much appreciated and enjoyed by all the children.

### REGIONAL CROSS COUNTRY

On Friday, 31 May 2013 Dominic Nikolovski competed at the Regional Cross Country Carnival at Nowra. Dominic completed the difficult course and finished in 55<sup>th</sup> position. What a fantastic effort Dominic. We are all very proud of you.

### RUGBY LEAGUE LEGENDS DAY

Unfortunately the Rugby League Legends Day at Parrish Park on Tuesday, 28 May 2013 was cancelled due to the recent heavy rain. Our school won't be competing as the next carnival clashes with events that are already organised within the school.



### P.S.S.A. FRIDAY SPORT RUGBY UNION

Our Year 5/6 students have been fortunate to participate in a program run by N.S.W. Rugby Union at the University. This program runs for 5 weeks where the children will be playing non-contact tag learning skills and playing games in a round robin format.

### PREMIERS SPORTING CHALLENGE

Once again this year Gwynneville Public School will be a part of the Premiers Sporting Challenge. All children K-6 will be involved in recording their activity levels each day. The recorded activities can be ones that the children do before, after or at school.

Our aim is to increase the level of physical activity that each child does each day.

Mrs Devlin



# **Wollongong Touch Assoc.**

**2013 JUNIOR TOUCH COMPETITION – 4<sup>th</sup> TERM**

**START: Wednesday 9<sup>th</sup> October**

**VENUE: Thomas Dalton Park, Fairy Meadow**

**AGE GROUPS: U8, U10, U12, U14 Boys & Girls**

**SUBJECT TO TEAM NUMBERS – MUST HAVE 4 TEAMS FOR A COMPETITION**

**COST: \$65 first child, \$55 every other child**

**REGO: Wednesday 10<sup>th</sup> July – 5.00pm to 6.00pm**

**Saturday 13<sup>th</sup> July – 10am to 12noon**

**Wednesday 17<sup>th</sup> July – 5.00pm to 6.00pm**

**Saturday 20<sup>st</sup> July – 10am to 12noon**

**Wednesday 24<sup>th</sup> July – 5.00pm to 6.00pm**

**Saturday 27<sup>th</sup> July – 10am to 12noon**

**ALL ENQUIRIES TO:**

**Junior Director: Ali Day 0413 012 682**

**Email: [benalisigns@optusnet.com.au](mailto:benalisigns@optusnet.com.au)**



129 JARDINE ST  
FAIRY MEADOW  
NSW 2519  
(02) 42 84 44 14  
[WWW.CITYLIFE.ORG.AU](http://WWW.CITYLIFE.ORG.AU)

## **CITYLIFE COMMUNITY INITIATIVES ADHD/ASD SUPPORT GROUPS A Presentation with Dr. Johnstone**

Dr Johnstone is from Wollongong University and studies the brain function of children with ADHD. He will be talking to us about his research and the new game Focus Pocus aimed at helping children increase their ability to concentrate.

This will be a great opportunity to learn more about our children's brains and to ask Dr. Johnstone any questions that you have re ADHD.

**WHEN: 19<sup>th</sup> June 7.30pm**

**WHERE: Citylife Church**

**2/129 Jardine St (west end)**

**Fairy Meadow 2519**

**COST: Gold Coin Donation**

**Information: 0242844414**

**0413048453**

*You give but little when you give of your possessions. It is when you give of yourself that you truly give. Kahlil Gibran*